

Collector Retainers

Wing Tab



	Part #	Description
Kits	CWTK100	(2) CWT100, (1) 10-32 bolt, (2) AN washers, (1) lock nut
	CWTK100S	(2) CWT100S, (1) 10-32 bolt, (2) AN washers, (1) lock nut
Individual Parts	CWT100	Collector Wing Tab
	CWT100S	Collector Wing Tab (304 Stainless)
	AN3-24A	10-32 x 2.50" UHL Bolt
	AN3-30A	10-32 x 3.00" UHL Bolt
	AN960-10	#10 AN Washer
	AN363-10	10-32 Mechanical Lock Nut

Spring Tab



	Part #	Description
Kits	STK100	(2) ST100 & (1) CES238
	STK100S	(2) ST100S & (1) CES238
Individual Parts	ST100	Spring Tab
	ST100S	Spring Tab (304 Stainless)
	CES238	Coned Extension Spring (2.375" OAL)

Static length of spring - 2.375"

Preload - .250" to .375"

A & B Tab



	Part #	Quantity
Kits	ABK100	A100 & B100 w/ 1/4-20 bolt & lock nut
	ABK100S	A100S & B100S w/ 1/4-20 bolt & lock nut
Individual Parts	A100	A Tab - Mild Steel
	A100S	A Tab - (304 Stainless)
	B100	B Tab - Mild Steel
	B100S	B Tab - (304 Stainless)

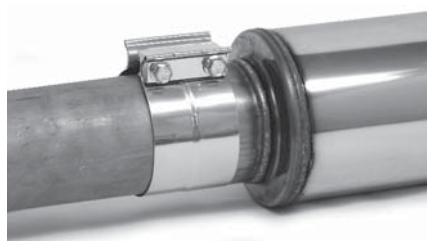
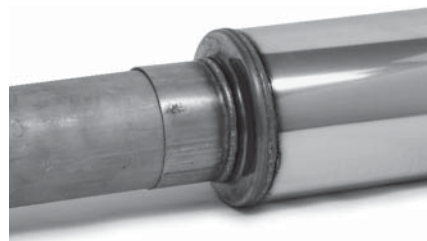


Tube Clamps

Preformed Exhaust Band Clamps

Tube Size	Part #
2.50	TT250S
3.00	TT300S
3.50	TT350S
4.00	TT400S
5.00	TT500S

These clamps are designed to be used on overlap joints such as muffler inlets and outlets. They are especially helpful in applications where ground clearance is an issue.



Part #	Tube Size	Size Range
TBC125	1.250	1.16 - 1.47
TBC150	1.375 - 1.500	1.25 - 1.56
TBC163/175	1.625 - 1.750	1.55 - 1.83
TBC188	1.750 - 1.875	1.73 - 2.03
TBC200	2.000	1.86 - 2.17
TBC225	2.250	2.16 - 2.47
TBC238	2.375	2.20 - 2.51
TBC250	2.500	2.34 - 2.65
TBC263	2.625	2.41 - 2.72
TBC275	2.750	2.66 - 2.97
TBC300	3.000	2.91 - 3.22
TBC325	3.250	3.16 - 3.47
TBC350	3.500	3.41 - 3.72
TBC375	3.750	3.66 - 3.97
TBC400	4.000	3.78 - 4.09
TBC413	4.125	4.03 - 4.35
TBC500	5.000	4.78 - 5.09
TBC 600	6.000	5.78 - 6.09

T-Bolt Clamps



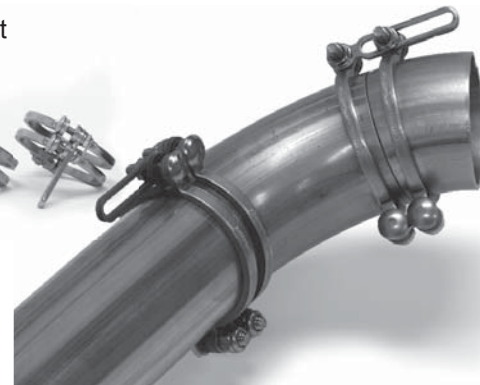
Designed for silicone or rubber hose. T-Bolt clamps are commonly used on motorcycle exhaust to clamp thin wall tubing (.049 & under).

icengineworks™ Tack-Welding Clamps

Tube Size	Part #
1.625	ICE1625TTWCS
1.750	ICE1750TTWCS
1.875	ICE1875TTWCS
2.000	ICE2000TTWCS



4 Clamps per set



"The icengineworks™ tack-welding clamps offer the unprecedented ability for the user to temporarily build, support and hold together, complex tubular assemblies through concentric and gapless joints for preview and test-fit prior to tack welding them in place.

Victor Franco President icengineworks™

Weld Bungs

O2 - NPT - A.I.R. - E.G.T.



	Part #	Thread & Pitch	Description
O2	O2-1815	18mm x 1.5	O-2 Weld-On 18mm x 1.50 pitch
	O2-1815S	18mm x 1.5	O-2 Weld-On 304 SST 18mm x 1.50 pitch
	O2-1815P	18mm x 1.5	O-2 Plug 18mm x 1.50 pitch
	O2-1815G	18mm x 1.5	O-2 Gasket (copper)

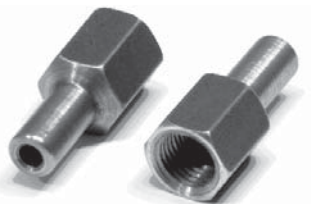


	Part #	Thread & Pitch	Description
NPT Bungs	NPT125	1/8" NPT	Female 1/8" NPT Bung
	NPT125S	1/8" NPT	Female 1/8" NPT Bung 304 SST
	NPT250	1/4" NPT	Female 1/4" NPT Bung
	NPT250S	1/4" NPT	Female 1/4" NPT Bung 304 SST
	NPT375	3/8" NPT	Female 3/8" NPT Bung
	NPT375S	3/8" NPT	Female 3/8" NPT Bung 304 SST
	NPT500	1/2" NPT	Female 1/2" NPT Bung
	NPT500S	1/2" NPT	Female 1/2" NPT Bung 304 SST

NPT Plugs	NPT125SP	1/8" NPT	Female 1/8" NPT Plug 304 SST
	NPT250SP	1/4" NPT	Female 1/4" NPT Plug 304 SST



NPT Nipples	NPT500-M	1/2" NPT	Male 1/2" NPT x 6.00" OAL coupler (for Vac-U-Pan)
	NPT500-MS	1/2" NPT	Male 1/2" NPT x 6.00" OAL 304 SST Coupler (for Vac-U-Pan)



	Part #	Thread & Pitch	Description
A.I.R.	GM1/2-18	1/2 - 18	Female fitting to accept OEM GM A.I.R. manifold



	Part #	Thread & Pitch	Description
E.G.T.	TF0125	8 mm - 1.25	Male 1/8" Compression Fitting
	TF0125S	8 mm - 1.25	Male 1/8" Compression Fitting 304 SST
	For use with Racepak E.G.T. Probes		
	TF0250	7/16 - 20	Male 1/4" Compression Fitting
	TF0250S	7/16 - 20	Male 1/4" Compression Fitting 304 SST

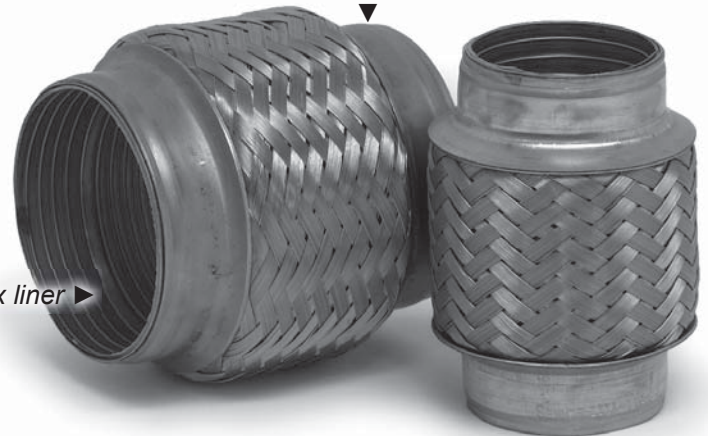
Bellows

Standard Bellows

Tube Size OD	SPD Part #	Overall Length
1.75"	SB175-4S	4.00"
2.00"	SB200-4S	4.00"
2.25"	SB225-4S	4.00"
2.50"	SB250-4S	4.00"
3.00"	SB300-4S	4.00"

ALL STAINLESS construction including end caps

Internal flex liner



Features & Recommended Usage

- ▶ Standard bellows are typically used somewhere between the header collector and the muffler to absorb axial movement (engine and chassis flex).
- ▶ Not recommended for use in pre-turbo plumbing.

Slip Joint Bellows

Tube Size OD	SPD Part #	Overall Length
2.00"	SJSB200-3	3.00"
2.25"	SJSB225-3	3.00"
2.50"	SJSB250-3	3.00"
3.00"	SJSB300-3	3.00"
3.50"	SJSB350-3	3.00"

Other sizes available by special order.



Features & Recommended Usage

- ▶ Slip Joint bellows are designed for use in high temperature and high pressure environments.
- ▶ 18 gauge 321 SST internal slip joint provides a smooth surface for directional flow.
- ▶ 625 inconel accordion style bellows absorb linear growth caused by thermal expansion.
- ▶ Limited angular flex. Not made for extreme axial movement.