

# (ARP) Header Bolts



Thread Size & Pitch	Head	UHL	ARP Black Oxide	ARP SST 300 Series	Pkg Qty	
<b>3/8-16</b>	<b>3/8 Hex</b>	.750"	ARP100-1101	ARP400-1101	12 pcs.	
		.750"	ARP100-1102	ARP400-1102	16 pcs.	
	<b>3/8 Hex (Drilled)</b>	1.00"			ARP334-2102	12 pcs.
		.750"		ARP100-1103	ARP400-1103	12 pcs.
		.875"			ARP400-1104	16 pcs.
		.750"			ARP400-1105	16 pcs.
		.875"			ARP400-1106	12 pcs.
	<b>5/16 Hex</b>		.750"	ARP100-1107	ARP400-1107	12 pcs.
			.750"	ARP100-1108	ARP400-1108	16 pcs.
			1.00"	ARP100-1109	ARP400-1109	12 pcs.
			1.00"	ARP100-1110	ARP400-1110	16 pcs.
	<b>3/8 12pt.</b>		.750"	ARP100-1201	ARP400-1201	12 pcs.
			.750"	ARP100-1202	ARP400-1202	16 pcs.
			.750"	ARP100-1203	ARP400-1203	12 pcs.
	<b>3/8 12pt. (Drilled)</b>		.875"		ARP400-1204	16 pcs.
			.750"		ARP400-1205	16 pcs.
			.875"		ARP400-1206	12 pcs.
	<b>5/16 12pt.</b>		.750"	ARP100-1207	ARP400-1207	12 pcs.
			.750"	ARP100-1208	ARP400-1208	16 pcs.
			.750"	ARP100-1209	ARP400-1209	12 pcs.
1.00"			ARP100-1210	ARP400-1210	16 pcs.	
<b>5/16-18</b>	<b>3/8 Hex</b>	.750"	ARP144-1102	ARP444-1102	14 pcs.	
	<b>3/8 12pt.</b>	.750"	ARP144-1202	ARP444-1202	14 pcs.	
<b>LS-1 Stud Kit</b>	<b>8mm. 12pt.</b>	1.250"		ARP434-1301	12 pcs.	

## O2 - NPT - Vac-u-pan - A.I.R. - EGT

	Part #	Thread & Pitch	Description
<b>O2</b>	O2-1815	18mm x 1.5	O-2 Weld-on 18 mm x 1.50 pitch
	O2-1815S	18mm x 1.5	O-2 Weld-on 304 SST 18mm x 1.50 pitch
	O2-1815P	18mm x 1.5	O-2 Plug 18 mm x 1.50 pitch
	O2-1815G	18mm x 1.5	O-2 Gasket 18 mm (copper)



	Part #	Thread & Pitch	Description
<b>NPT Bungs</b>	NPT125	1/8" NPT	Female 1/8" NPT Bung
	NPT125S	1/8" NPT	Female 1/8" NPT Bung 304 SST
	NPT250	1/4" NPT	Female 1/4" NPT Bung
	NPT250S	1/4" NPT	Female 1/4" NPT Bung 304 SST
	NPT375	3/8" NPT	Female 3/8" NPT Bung
	NPT375S	3/8" NPT	Female 3/8" NPT Bung 304 SST
	NPT500	1/2" NPT	Female 1/2" NPT Bung
	NPT500S	1/2" NPT	Female 1/2" NPT Bung 304 SST
<b>NPT Plugs</b>	NPT125SP	1/8" NPT	Female 1/8" NPT Plug 304 SST
	NPT250SP	1/4" NPT	Female 1/4" NPT Plug 304 SST
<b>NPT Nipples</b>	NPT500-M	1/2" NPT	Male 1/2" NPTx 6.00"oal coupler (for Vac-u-pan)
	NPT500-MS	1/2" NPT	Male 1/2" NPTx 6.00"oal 304 SST Coupler (for Vac-u-pan)



	Part #	Thread & Pitch	Description
<b>A.I.R.</b>	GM1/2-18	1/2" - 18	Female fitting to accept OEM GM A.I.R. manifold



	Part #	Thread & Pitch	Description
<b>E.G.T.</b>	TF0125	1/8" NPT	Male 1/8" Compression Fitting
	TF0125S	1/8" NPT	Male 1/8" Compression Fitting 304 SST
	For use with Racepak E.G.T. Probes		
	TF0250	1/4" NPT	Male 1/4" Compression Fitting
	TF0250S	1/4" NPT	Male 1/4" Compression Fitting 304 SST



# T-Bolt Clamps



Part #	Tube Size ID	Size Range
TBC125	1.250	1.16 - 1.47
TBC150	1.375 - 1.500	1.25 - 1.56
TBC163/175	1.625 - 1.750	1.55 - 1.83
TBC188	1.750 - 1.875	1.73 - 2.03
TBC200	2.000	1.86 - 2.17
TBC213	2.125	2.03 - 2.34
TBC225	2.250	2.16 - 2.47
TBC238	2.375	2.20 - 2.51
TBC250	2.500	2.34 - 2.65
TBC263	2.625	2.41 - 2.72
TBC275	2.750	2.66 - 2.97
TBC300	3.000	2.91 - 3.22
TBC325	3.250	3.16 - 3.47
TBC350	3.500	3.41 - 3.72
TBC375	3.750	3.66 - 3.97
TBC400	4.000	3.78 - 4.09
TBC413	4.125	4.03 - 4.35
TBC500	5.000	4.78 - 5.09
TBC 600	6.000	5.78 - 6.09

## T-Shirts

Med - Large - XL - 2X \$15.00

Available in:  
White or Ash



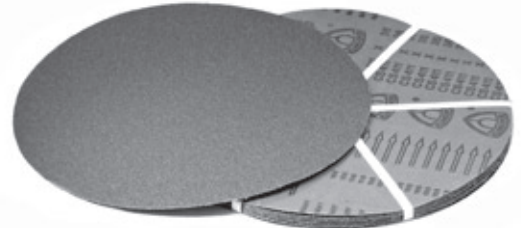
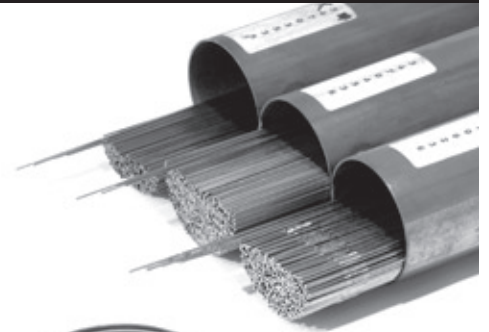
Part #	Description
<b>For use in welding 304 stainless</b>	
30803536	308 x .035 x 36" oal Stainless Tig Welding Wire
30804536	308 x .045 x 36" oal Stainless Tig Welding Wire
30806236	308 x .062 x 36" oal Stainless Tig Welding Wire
<b>For use in welding 304 stainless to carbon steel</b>	
30903536	309 x .035 x 36" oal Stainless Tig Welding Wire
30904536	309 x .045 x 36" oal Stainless Tig Welding Wire
30906236	309 x .062 x 36" oal Stainless Tig Welding Wire
<b>For use in welding 321 or 304 Stainless</b>	
34703536	347 x .035 x 36" oal Stainless Tig Welding Wire
34704536	347 x .045 x 36" oal Stainless Tig Welding Wire
34706236	347 x .062 x 36" oal Stainless Tig Welding Wire
Solarflux B	Flux for welding stainless & alloy steels Used in place of an inert purge inside of parts being welded.
<b>For TIG welding mild steel</b>	
70S203536	70S-2 mild steel TIG welding rod
70S204536	70S-2 mild steel TIG welding rod
70S206236	70S-2 mild steel TIG welding rod
<b>For TIG brazing stainless or mild steel</b>	
SIB03536	Silicone Bronze TIG brazing rod
SIB06236	Silicone Bronze TIG brazing rod

Part #	Description
CW14MA	14" x 7/64" x 1" metal cut-off wheel
CW14MASR	14" x 7/64" x 1" metal cut-off wheel (stainless)

HR10040	Handy roll 40-grit (1" x 50+yds)
---------	----------------------------------

PSA16	16" cloth PSA disc - 36 grit
-------	------------------------------

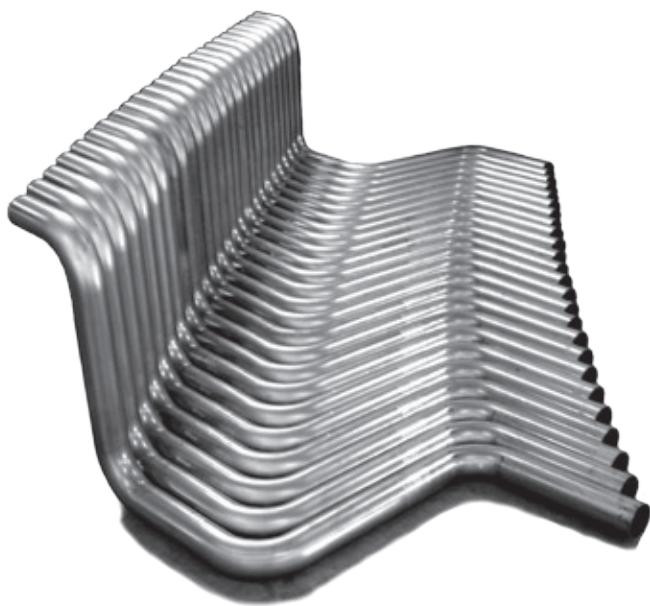
AFD40	Abrasive flap disc - 40 grit x 4.50 OD
-------	--



SPD currently manufactures private label components and finished products for a number of companies in the automotive industry. We can work from an existing design or create a prototype for you. Our years of experience in research and development on exhaust products, for the racing industry, are at your disposal to ensure the best results for your finished product.

## Header Sets

We will gladly quote on special headers with a quantity of 25 sets or greater. As with all of our products, we use the best materials available in the manufacturing process. From prototype to finished product, SPD can help with every step.



## Custom Bends & Tube Bending

Our NC and CNC mandrel benders are capable of bending up to 3.5" in most materials. We also have an extensive and growing list of tooling to provide you with the right radius for your project (see mandrel bend table pgs.20-21). To make parts more cost effective and reduce or eliminate set-up time costs, we have a 50 piece minimum per tube size and center line radius.



## CNC Machining

With our Mazak VTC200-50 CNC machining center, we produce machined header flanges that meet exacting standards. We stock well over 100 different applications for OEM and aftermarket cylinder heads. Most come in a variety of port shapes and sizes and are available from  $\frac{3}{8}$ " thick 1018 cold rolled steel.

If you don't see your application in our catalog, it is possible we can machine them for you. The popularity of some applications may make ideal additions to our product line. In this case, any special programming and set-up fees can be reduced or eliminated.

*$\frac{1}{2}$ " thick and/or 304 stainless are available by special order.*

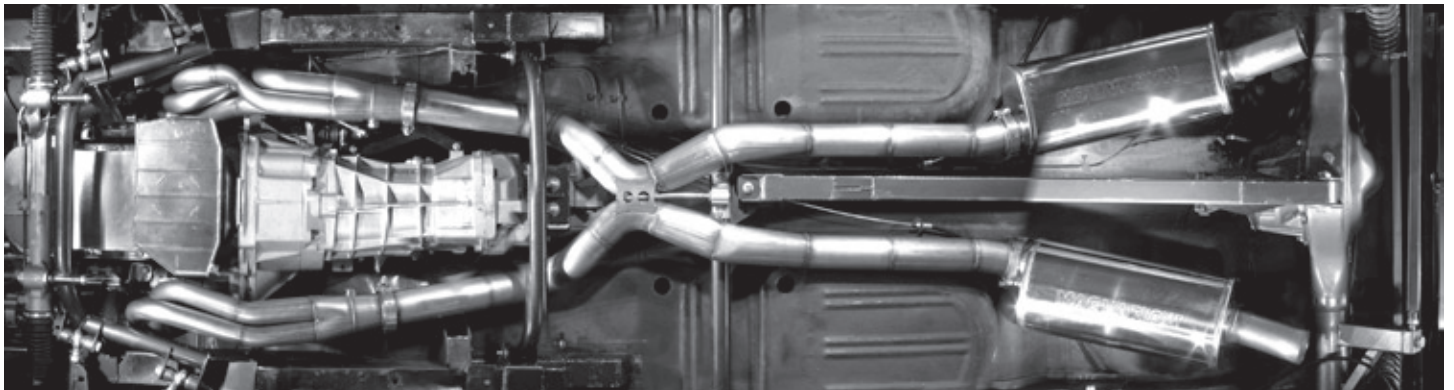
## Component Fabrication



With your technical drawings or simple specifications (depending on the complexity of your part) we can fabricate your custom parts. Parts costs are figured at time and materials. Some parts may require fixtures.

---

## Custom Exhaust



The primary focus at SPD continues to be supplying fabricators and distributors with quality components. We do still regularly put those parts to use building custom headers and exhaust systems. If you are within towing distance, say 2 - 2000 miles, please call and talk to us about bringing your race car, boat, motorcycle, or street rod in for some new pipes.

---

## Racing Headers

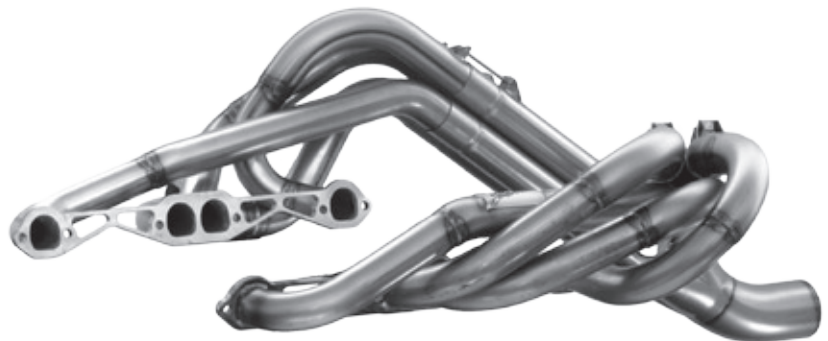
SPD produces headers for a number of racing classes with standard engine / chassis configurations.

### Stock Cars

Late models (ASA) / Cup / NCTS

### Drag Racing

Top Fuel / Top Alcohol / Funny Car



# Vehicle Specification Form



Name \_\_\_\_\_

Cust # \_\_\_\_\_

Company \_\_\_\_\_

Phone # \_\_\_\_\_

Fax # \_\_\_\_\_

## Chassis

Car \_\_\_\_\_

Style \_\_\_\_\_

Weight \_\_\_\_\_

## Sanctioning Body

\_\_\_\_\_

Class \_\_\_\_\_

Track \_\_\_\_\_

## Engine

Mfg. \_\_\_\_\_

Type \_\_\_\_\_

C.I.D. \_\_\_\_\_

## Intake

Type \_\_\_\_\_

Runner Length \_\_\_\_\_

Carb. \_\_\_\_\_

## Heads

Model \_\_\_\_\_

Intake CFM \_\_\_\_\_

Exhaust CFM \_\_\_\_\_

## Cam

Intake Lift \_\_\_\_\_

Exhaust Lift \_\_\_\_\_

Lobe Center \_\_\_\_\_

Intake Dur. \_\_\_\_\_

Exhaust Dur. \_\_\_\_\_

## Dyno

Peak HP \_\_\_\_\_

@ \_\_\_\_\_ RPM

Peak Torque \_\_\_\_\_

@ \_\_\_\_\_ RPM

## RPM Range

Low \_\_\_\_\_

High \_\_\_\_\_

## Transmission

Type \_\_\_\_\_

1st Gear \_\_\_\_\_

Stall \_\_\_\_\_

## Tire / Gear

Tire Size \_\_\_\_\_

Gear Ratio \_\_\_\_\_



# SPD's Promise

SPD has built and maintained a reputation for quality and service. Part of that service is making our comprehensive product line available to ship the same day. We know your business or race team race team depends on fast service. The size and structure of our company allows us to be nimble enough to provide you with off the shelf or custom parts in a timely manner.

## Order Processing In Stock

*On orders placed before 2:30pm PST  
Every effort will be made to ship the same day.*

*Processing of orders placed after 2:30pm PST  
Will vary depending on the order volume of the day.*

## Back Orders

*Back orders will be expedited and shipped as soon as time and materials allow.*

## Shipping

### FedEx Sevices Available

#### Overnight

*Standard Overnight*

*by 3:00pm*

*Priority Overnight*

*by 10:30am (Noon if C.O.D.)*

*First Overnight*

*by 8:30am*

*Saturday Delivery*

#### 2-Day

*2nd Day*

*by 4:30pm*

#### 3-Day

*Express Saver*

*by 4:30pm*

#### FedEx Freight

*350 lbs. min. on out of state shipments*

## Returns

*Call for a RGA (Return Goods Authorization) on any returns.*

*No products may be returned for credit after 30 days from receipt of merchandise.*

*(Please check inspect shipments immediately upon receipt)*

*All returns are subject to a 25% restocking fee (unless shipped in error)*

*No returns on Merge Collectors, straight tubing, or custom / special order parts*



## Making a pencil transfer (Rubbing)

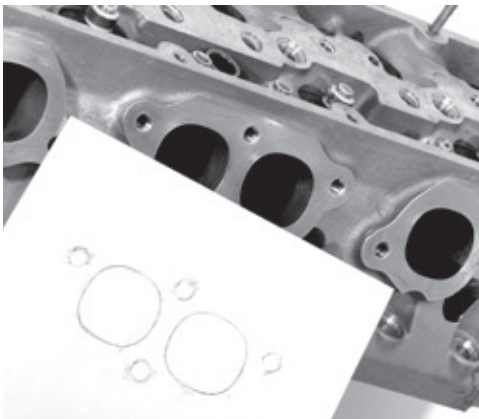
Due to the rapidly changing cylinder head industry, you may be asked to send a rubbing of your exhaust ports.



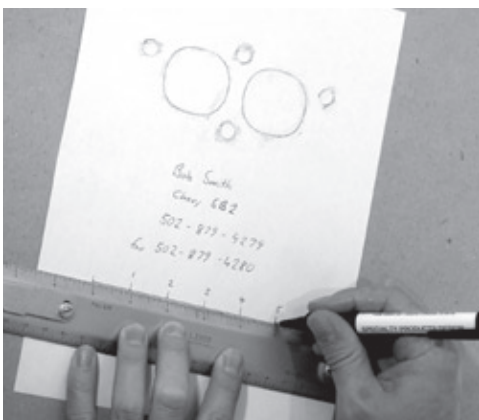
Place a sheet of paper covering port(s). Holding it firmly with one hand, use your index finger to rub the edges of the port(s) and bolt holes.



Holding the pencil's face flat against the paper, define the ports and bolt pattern.



Make sure the transfer is accurate and the paper did not slip during the process.



Please include a scale along with your contact information as the fax machine will shrink the image.