

# Header Bolts



Thread Size & Pitch	Head	UHL	ARP Black Oxide	ARP SST 300 Series	Pkg Qty	
3/8-16	3/8 Hex	.750"	ARP100-1101	ARP400-1101	12 pcs.	
		.750"	ARP100-1102	ARP400-1102	16 pcs.	
		1.00"	ARP100-1112		16 pcs.	
	3/8 Hex (Drilled)	1.00"			ARP334-2102	12 pcs.
		.750"	ARP100-1103	ARP400-1103	12 pcs.	
		.875"		ARP400-1104	16 pcs.	
		.750"		ARP400-1105	16 pcs.	
		.875"		ARP400-1106	12 pcs.	
	5/16 Hex	.750"	ARP100-1107	ARP400-1107	12 pcs.	
		.750"	ARP100-1108	ARP400-1108	16 pcs.	
		1.00"	ARP100-1109	ARP400-1109	12 pcs.	
		1.00"	ARP100-1110	ARP400-1110	16 pcs.	
	3/8 12pt.	.750"	ARP100-1201	ARP400-1201	12 pcs.	
		.750"	ARP100-1202	ARP400-1202	16 pcs.	
		.750"	ARP100-1203	ARP400-1203	12 pcs.	
	3/8 12pt. (Drilled)	.875"		ARP400-1204	16 pcs.	
		.750"		ARP400-1205	16 pcs.	
		.875"		ARP400-1206	12 pcs.	
	5/16 12pt.	.750"	ARP100-1207	ARP400-1207	12 pcs.	
		.750"	ARP100-1208	ARP400-1208	16 pcs.	
.750"		ARP100-1209	ARP400-1209	12 pcs.		
1.00"		ARP100-1210	ARP400-1210	16 pcs.		
5/16-18	3/8 Hex	.750"	ARP144-1102	ARP444-1102	14 pcs.	
	3/8 12pt.	.750"	ARP144-1202	ARP444-1202	14 pcs.	
LS-1 Stud Kit	8mm. 12pt.	1.250"		ARP434-1301	12 pcs.	

# Fabrication Supplies

## Welding Rod

Part #	Description
<b>For use in TIG welding 304 Stainless</b>	
30803536	308 x .035 x 36" oal Stainless Tig Welding Wire
30804536	308 x .045 x 36" oal Stainless Tig Welding Wire
30806236	308 x .062 x 36" oal Stainless Tig Welding Wire
<b>For use in TIG welding 304 Stainless to Carbon</b>	
30903536	309 x .035 x 36" oal Stainless Tig Welding Wire
30904536	309 x .045 x 36" oal Stainless Tig Welding Wire
30906236	309 x .062 x 36" oal Stainless Tig Welding Wire
<b>For use in TIG welding 321 or 304 Stainless</b>	
34703536	347 x .035 x 36" oal Stainless Tig Welding Wire
34704536	347 x .045 x 36" oal Stainless Tig Welding Wire
34706236	347 x .062 x 36" oal Stainless Tig Welding Wire
<b>Solarflux B</b>	<b>Flux for welding stainless &amp; alloy steels</b>
	Used in place of an inert purge inside of parts being welded.
<b>For use in TIG welding Carbon Steel</b>	
70S203536	70S-2 mild steel TIG welding rod
70S204536	70S-2 mild steel TIG welding rod
70S206236	70S-2 mild steel TIG welding rod
<b>For use in TIG brazing Carbon or Stainless Steel</b>	
SIB03536	Silicone Bronze TIG brazing rod
SIB06236	Silicone Bronze TIG brazing rod

## Sanding & Cutting

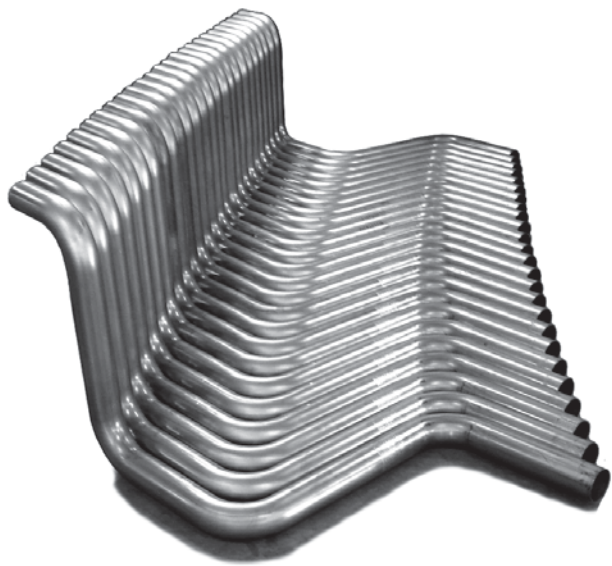
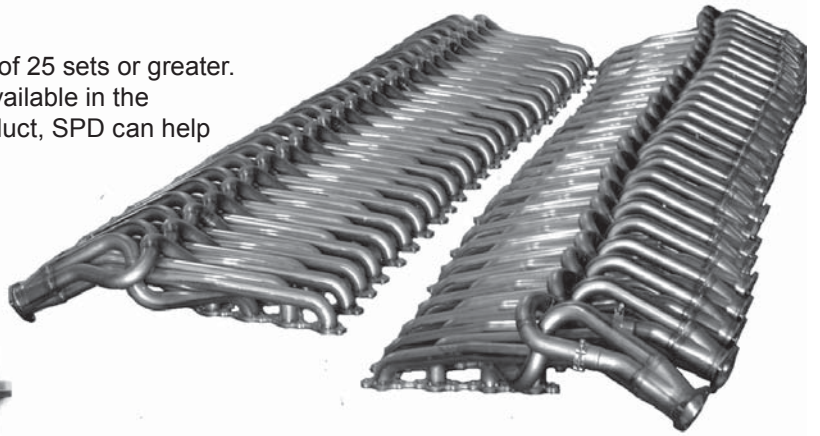
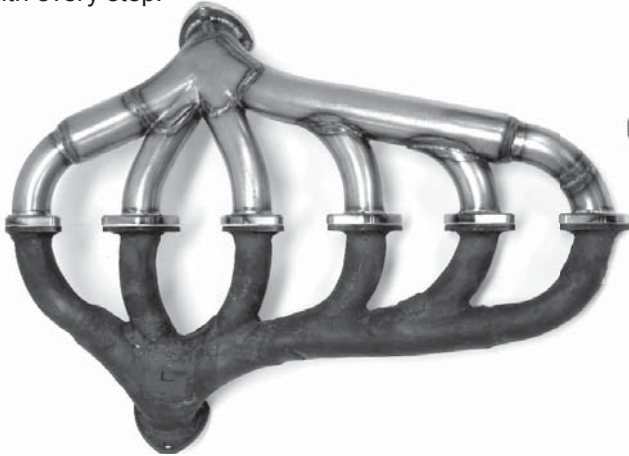
Part #	Description
CW14MA	14" x 7/64" x 1" metal cut-off wheel
CW14MASR	14" x 7/64" x 1" metal cut-off wheel (Stainless)
HR10040	Handy roll 40-grit (1" x 50+yds)
PSA16	16" cloth PSA disc - 36 grit
AFD40	Abrasive flap disc - 40 grit x 4.50 OD



# Proprietary Manufacturing

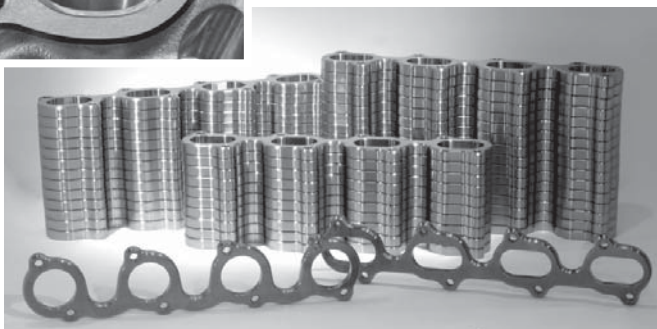
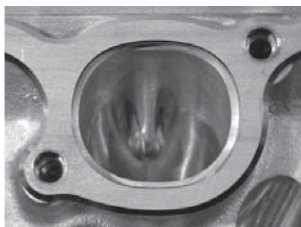
SPD currently manufactures private label components and finished products for a number of companies in the automotive industry. We can work from an existing design or create a prototype for you. Our years of experience in research and development on exhaust products for the racing industry are at your disposal to ensure the best results for your finished product.

We will gladly quote on special headers with a quantity of 25 sets or greater. As with all of our products, we use the best materials available in the manufacturing process. From prototype to finished product, SPD can help with every step.



## Custom Bends & Tube Bending

Our NC and CNC mandrel benders are capable of bending up to 3.50" in most materials. We also have an extensive and growing list of tooling to provide you with the right radius for your project (see mandrel bend table pgs.20-21). To make parts more cost effective and reduce or eliminate set-up time costs, we have a 50 piece minimum per tube size and center line radius.



## CNC Machining

With our Mazak VTC200-50 CNC machining center, we produce machined header flanges that meet exacting standards. We stock well over 100 different applications for OEM and aftermarket cylinder heads. Most come in a variety of port shapes and sizes and are available from  $\frac{3}{8}$ " thick 1018 cold rolled steel.

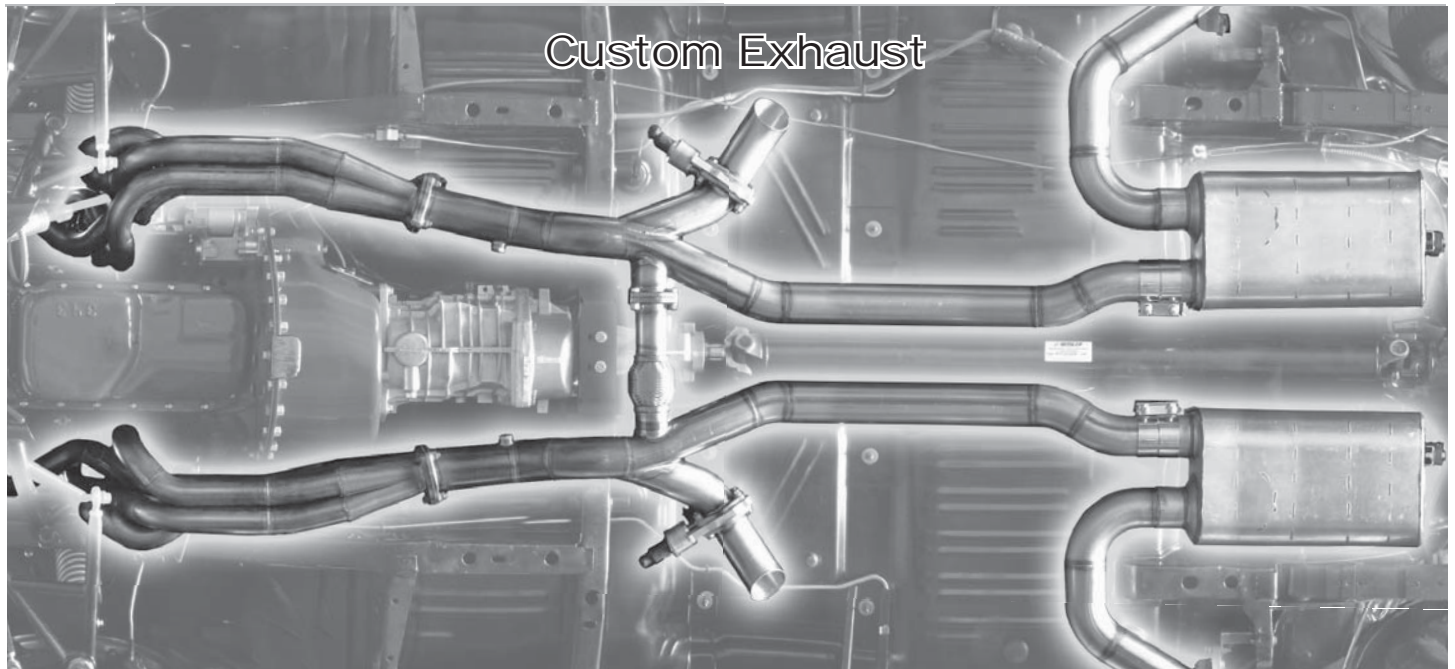
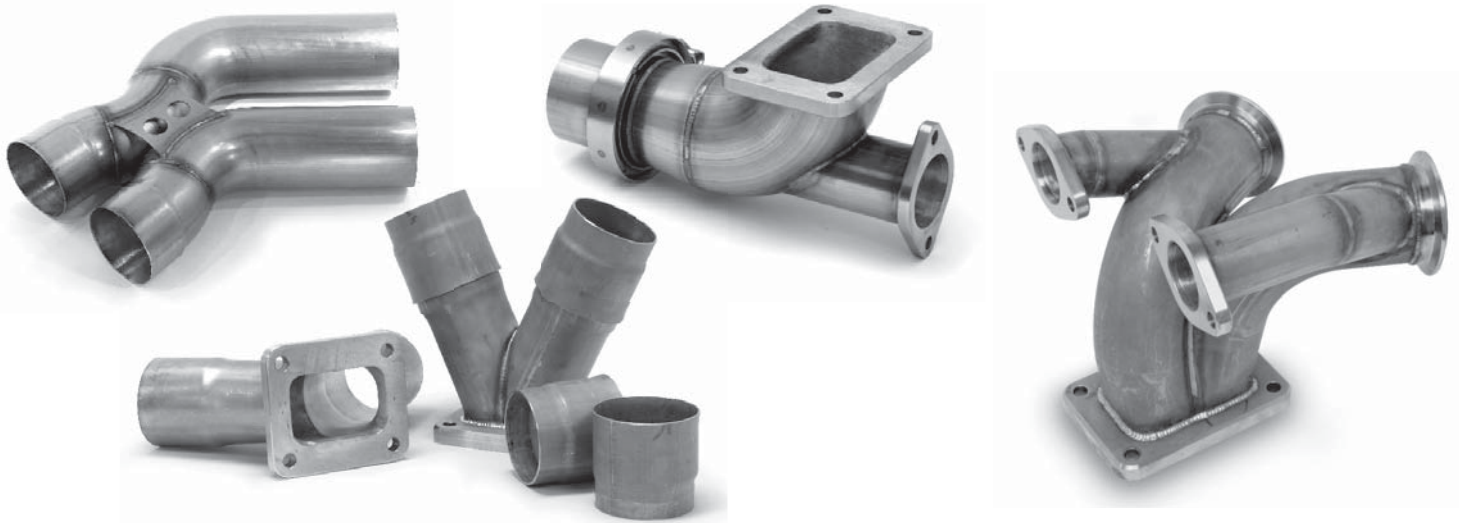
If you don't see your application in our catalog, it is possible we can machine them for you. The popularity of some applications may make ideal additions to our product line. In this case, any special programming and set-up fees can be reduced or eliminated.

*$\frac{1}{2}$ " Thick and/or 304 Stainless are available by special order.*

# Fabrication

## Component Fabrication

With your technical drawings or simple specification (depending on the complexity of your part) we can fabricate your custom parts. Parts costs are figured at time and materials. Some parts may require fixtures.



## Custom Exhaust

The primary focus at SPD continues to be supplying fabricators and distributors with quality components. We do still regularly put those parts to use building custom headers and exhaust systems. If you are within towing distance, say 2 - 2000 miles, please call and talk to us about bringing your race car, boat, motorcycle, or street rod in for some new pipes.

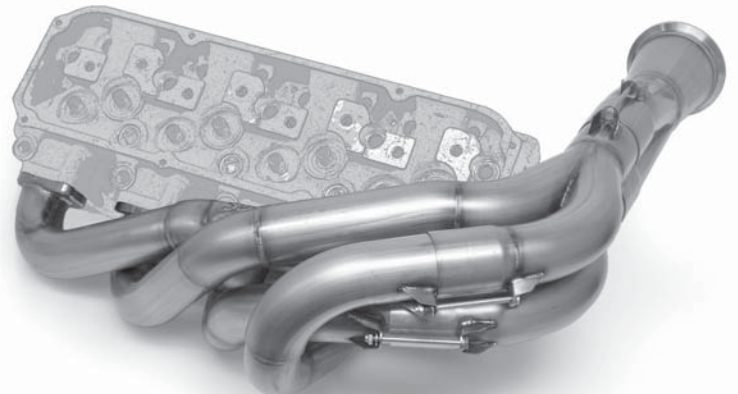
## Racing Headers

SPD produces headers for a number of racing classes with standard engine / chassis configurations.

Sports Cars  
Trans-Am / GT-1

Stock Cars  
Late models (ASA) / Cup / NCTS

Drag Racing  
Top Fuel / Top Alcohol / Funny Car



# Shipping & Policies

## **SPD** Promise

SPD has built and maintained a reputation for quality and service. Part of that service is making our comprehensive product line available to ship the same day. We know your business or race team depends on fast service. The size and structure of our company allows us to be nimble enough to provide you with off the shelf or custom parts in a timely manner.

---

## Order Processing

### In Stock

***On orders placed before 2:30pm PST***

*Every effort will be made to ship the same day.*

***Processing of orders placed after 2:30pm PST***

*Will vary depending on the order volume of the day.*

### Back Orders

***Back orders will be expedited and shipped as soon as time and materials allow.***

---

## Shipping

FedEx Express (*Overnight, 2nd Day & 3 Day*)

FedEx Ground

FedEx Freight

***350 lbs. min. on out of state shipments***

---

UPS Ground Services Available

---

## Returns

Please inspect shipments immediately upon receipt.

***All discrepancies must be reported to SPD within 5 days of the receipt of product by the customer.***

***Call for a RGA (Return Goods Authorization) on any returns.***

***No credit will be issued without a RGA number.***

***Stocking items returned over 14 days from date of receipt of product are subject to a 25% restocking fee (except in the case of an SPD error).***

***No products may be returned for credit after 30 days from receipt of merchandise.***

***No returns on Merge Collectors, straight tubing, or custom / special order parts***

# SPD craftsmen at work

A few examples of work completed for our customers

